

The colors of urban noise—a new concept of monitoring

Patrice Pischedda 、Didier Dufournet 、余忠和

01dB Acoustics & Vibration Asia Pacific
47509, Petaling Jaya, Malaysia
e-mail address: patrice.pischedda@01db.com

ABSTRACT

The new European directive puts pressure on noise policies in the cities. Measuring urban noise is not an easy task. The paper describes a new approach to the problem. It is based on a dense network of simple and independent measuring stations. Each station is connected to an area server via a Hertzian link. The area servers sort and transfer the data to a processing system (database archiving, web sites, particular calculations ...). The stations pre-process the signal and only relevant and pertinent information is transferred. For example, neural network based algorithms are implemented in the stations to automatically identify noise sources. The low price of the system (a small fraction of the current market price) makes possible a mesh density compatible with the complexity of sound propagation and problems to solve. A concrete urban implementation is shown in real time. Applications and development options are discussed.

1. INTRODUCTION

Measuring noise in the city is a necessary step towards the reduction of noise in the city. The need for urban noise reduction inspired the EU, and a new directive shows the direction.

Measuring noise, almost everybody can do it today. Even if we make it more difficult, asking for spectra or some finer descriptors (like loudness), many contemporary instruments deliver the requested values.

Measuring urban noise is another story. Some important requirements make the problem quite uneasy to solve. The measurement has to be long enough to allow the comparison of situations (ex: before and after the construction of a new road). The measurements have to cover a large territory, leading to a high number of measuring stations, and thus to increased costs, usually out of the reach of the cities. The duration and the geographical spread of the measuring stations complicate the maintenance of the system. Last but not least: the processing of a huge amount of data is a Herculean task.

The new expectations of people living in the large cities make all this even more complicated. A modern European wants to know in what environment he lives and a public access to the measurement data is necessary.

2. IMPORTANCE OF NOISE SOURCES

The measurement is a step towards reduction of noise – a measurement should thus give pertinent information about noise sources. The existing techniques of identification of sources are too expensive or not accurate enough for urban noise. The recognition of sources from the recorded signal, although very useful in shorter measurements and/or in a lower number of points, would lead to recruit an army of trained listeners to review the recordings from all the measuring stations.

We come here to another “de facto” requirement: the urban noise measurement system must be able to identify sources automatically.

3. MEASUREMENT DATA

Measuring an averaged 1/3 octave spectrum, plus a few global levels (different frequency weightings, different time constants), plus some statistical values, requires about 100 bytes per sample. Storing the data every second leads to a memory need of about 9 Megabytes of space per day, over 3 Gigabytes per point per year. Moreover, all this data is to be transmitted between the measuring point and a central storage. The choice of relevant data and its organization becomes a crucial point.

The processing of the noise data is just one of the tasks of the management of the city. In other words, the measuring system has to be compatible with other, more general tools used by the municipal technical services. Maybe the most obvious example is the compatibility with the geographic information system, also related to the EU directive. However, other requirements exist which cannot be neglected.

4. NEW CONCEPT

What we need is a measuring system with the following main features:

- Inexpensive
- Accurate
- Easy to install
- Easy to maintain
- Detecting automatically noise sources
- Filling an intelligent and compatible database
- Calculating requested indicators
- Publishing results.

The outline of the system is shown in fig. 1.

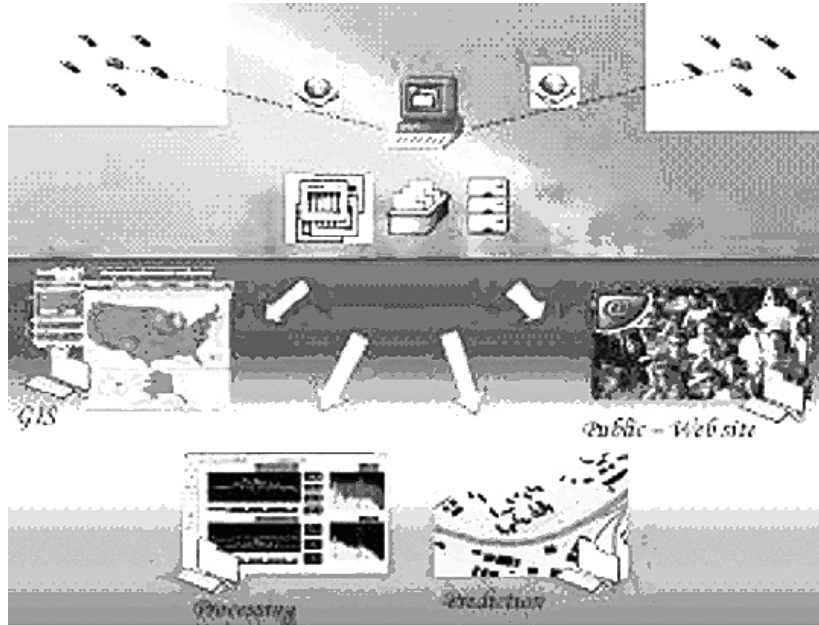


Fig. 1: The urban noise measurement

The system presented is composed of:

- Independent intelligent outdoor measuring units
- Gathering and controlling stations
- Communication devices and protocols
- Central data storage and processing.

The weatherproof measuring units are simple, reliable and inexpensive. They measure the noise with the required accuracy, process the signal and transfer the processed data.

The outdoor units are grouped into clusters. They are connected to the central point via either a wireless link or a cable (fig. 2)

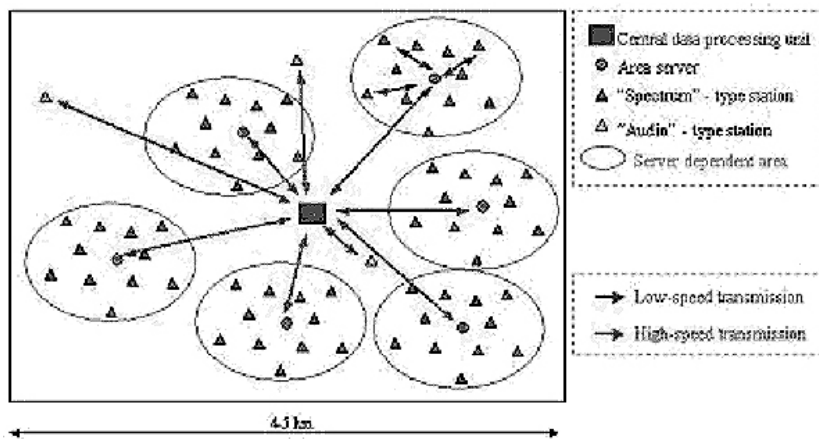


Fig. 2: Clusters of measuring points

Two types of measuring stations have been developed. The basic ones measure spectra and overall weighted levels. They are connected to the area server via a wireless link. The data flux is about 100 bytes per second, making the system reliable even in difficult urban conditions.

The second types are more advanced measuring stations. They are connected directly to the central processing unit, by-passing the area servers. The speed of this connection is significantly higher (starting at 9600 bits per second for a GSM phone, up to several megabytes per second for a specific network connection). These “fast” stations are used for more complex measurements, and they are typically able to transfer the signal itself (MP3 compressed if necessary).

Each area server scans (using the radio modem) the information from the remote stations of one cluster. The server is equipped with the appropriate hardware for Internet/Ethernet connection.

Finally, remotely controlled relays are also implemented at this level, allowing for example a pre-defined action in situ independently from the transmission of data (for example lighting an alert indicator when a contractual threshold has been exceeded).

5. DETECTION OF NOISE EVENTS

Besides the obvious acoustic processing, the processor of the station can be programmed to apply algorithms of noise source detection and identification. In many actual urban situations a simple observation of the overall level and its comparison with a predefined threshold is not sufficient (due for example to different background levels between day and night). The detection used here is based on the observation of the difference between a “short” descriptor and a “longer” descriptor, as shown schematically on figure 3:

錯誤! 物件無法用編輯功能變數代碼來建立。

Fig. 3: Principle of source detection.

In a steady state situation the short and the long descriptors are relatively close. An event is detected when the “short” descriptor exceeds the “long” one by a given number.

6. PROCESSING OF DETECTED EVENTS: IDENTIFICATION OF THE SOURCES

The station starts a finer work when an event is detected: identifying the origin of the noise.

Several different groups of algorithms may be applied to identify the detected events. In the tested system the algorithms developed in the frame of MADRAS European project have been used. These algorithms are based on a hierarchy of classifiers (neural networks, statistical classifiers, shape detectors ...), leading to the required level of selection.

The direct connection between the station and the central units makes all interactive tasks easier and diminishes the probability of an error. A learning session based on a known population of events of a given type is carried out in situ, adapting the coefficients to the particular environment of a particular point. The correction and improvements of the algorithms are possible by a remote downloading of the firmware.

7. REMOTE STATIONS

As the declared target is to make the stations inexpensive, the outdoor microphone appears quickly as one of the key elements. The development in this field is being continued, and first significant results are expected later this year.

The embedded signal conditioning comes from type I approved instruments. The precision of the system depends then on the sensor (microphone), provided the communication is sufficiently reliable. In consequence, the microphone determines the price of the unit.

Although miniaturized (fig. 4), each station contains several operating components like the acquisition front end, DSP (24 bits, 96 kHz), radio modem or cable link, GPS module ...

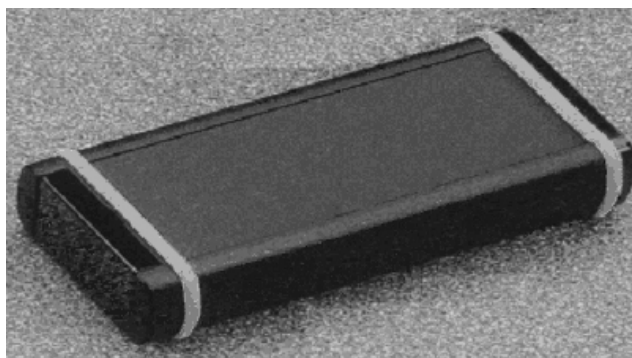


Fig. 4: Remote station (size approx. 20 cm)

8. DATA PROCESSING

The above mentioned quantity of data and the human resources necessary for its processing make the data storage and processing one of the most important features of the system.

The figure 5 shows the idea of the data storage. The measurement data are stored as they come in the first raw database. This base is archived and emptied at regular periods. The second database is a noise warehouse. It contains the information necessary for global processing, reporting, web publishing, decisions, etc. An important work is being carried on the tools extracting data from the raw base and transforming them into pertinent packages stored in the warehouse.

錯誤! 物件無法用編輯功能變數代碼來建立。

Fig. 5: Central server data storage

9. CURRENT STATE & DEVELOPMENT

The system has already been tested in real locations.

The main present hardware development concerns the inexpensive, precise and reliable outdoor microphone. A parallel development aims the establishment the limits of the wireless communication, leading to formulation of simple operational installation procedures.

However, the main present development concerns the software, and in particular the post processing. This work does not concern only the acoustics, in particular at the data warehouse level. This data processing is a logical part of the whole system, and it encapsulates the link between the measurement and its exploitation. The EU directive processing is carried here, and the measurement and the predicted (calculated) results meet at this level.